

ART. M8275-MT

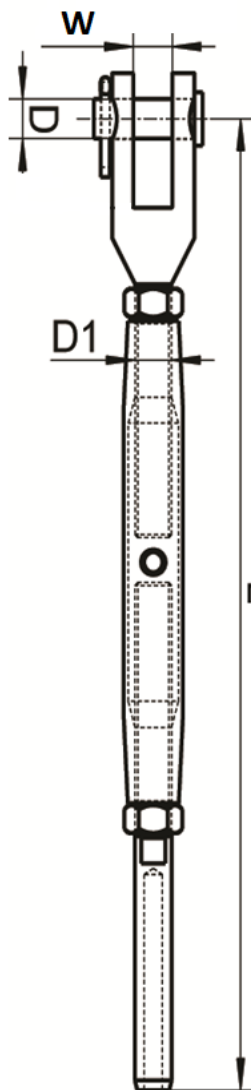
Tenditori forcella tornita-terminale per cavo, con canaula chiusa AISI 316

Closed Body Turnbuckle turned jaw-swage stud, AISI 316

Arridatoi



Codice Articolo Item Number	D1 (mm)	cavo (mm) wire rope (mm)	L (mm)	W (mm)	D (mm)	Box	Master carton	Pallet
M8275-4-5MT	M 5	2,5	155	6,5	5	10	100	4000
M8275-4-6MT	M 6	3	180	7,5	6	10	60	2400
M8275-4-8MT	M 8	4	210	11	8	10	60	2400
M8275-4-10MT	M10	5	240	12	9	5	30	1200
M8275-4-12MT	M12	6	300	14	12	5	20	800
M8275-4-16MT	M16	8	380	17	16	1	20	640



Attenzione!!! Nessuno dei nostri prodotti soddisfa i requisiti per l'utilizzo in apparecchiature di sollevamento, imbracature o mezzi di sostegno carichi (Direttiva 2006/42/CE), né possiede la conformità che certifica la verifica dei requisiti della norma tecnica EN 795:2012 (Linee vita classi A, C e D Norma UNI 11578:2015), né la marcatura CE (es. Linee vita classi B e E).

Le caratteristiche tecniche sopra riportate, sono puramente indicative e possono subire variazioni da lotto a lotto

Pay attention!! None of our products have been developed or manufactured for lifting equipment, slings or load support devices (Directive 2006/42/EC). As for the fall protection systems, our products do not have the conformity certifying the verification of the requirements of the technical standard EN 795:2012 (fall protection systems Class A, C and D) and do not have the CE marking (eg. fall protection systems Class B and E). The dimensions shown in the data sheets are subject to variations (different production line batch).

last edit 15/09/21

DRAWING N. 1197